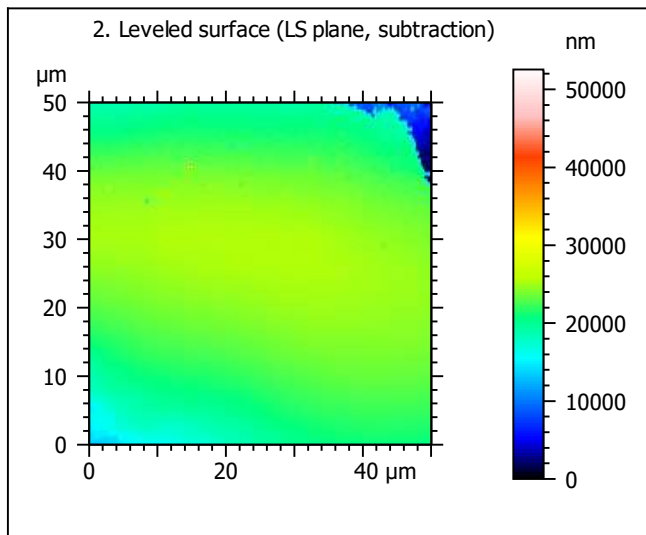
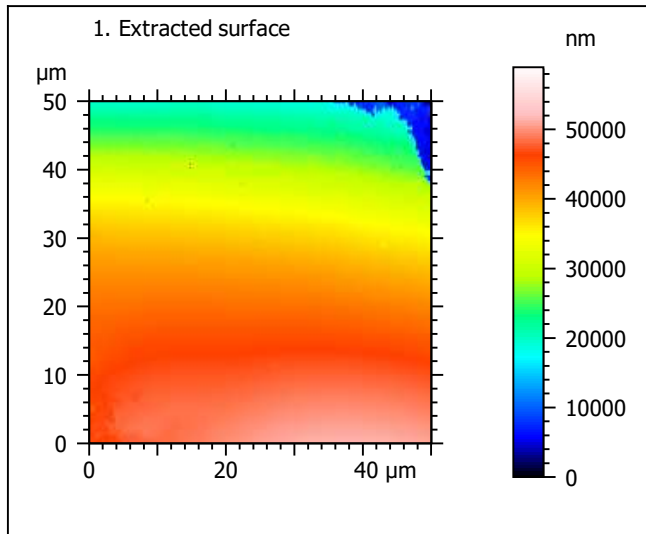
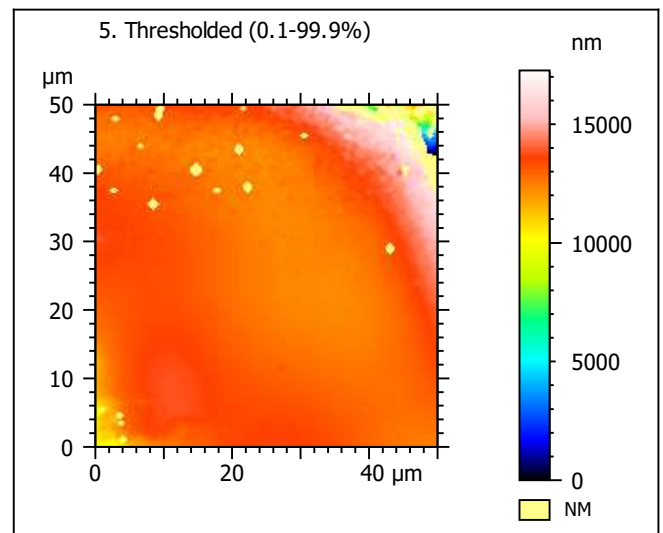
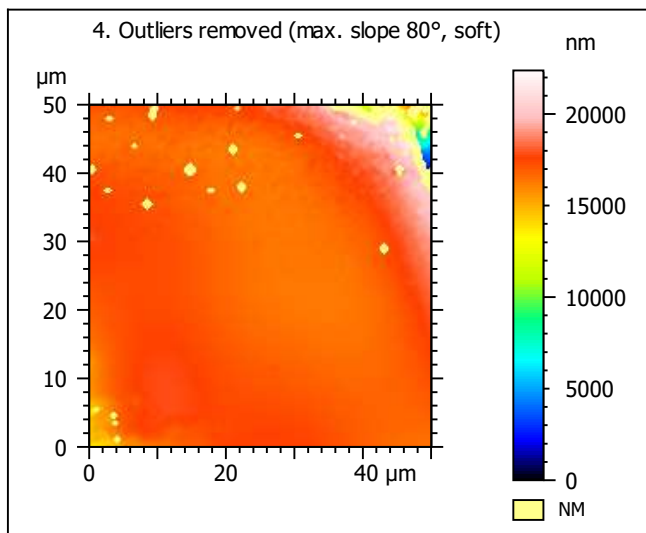
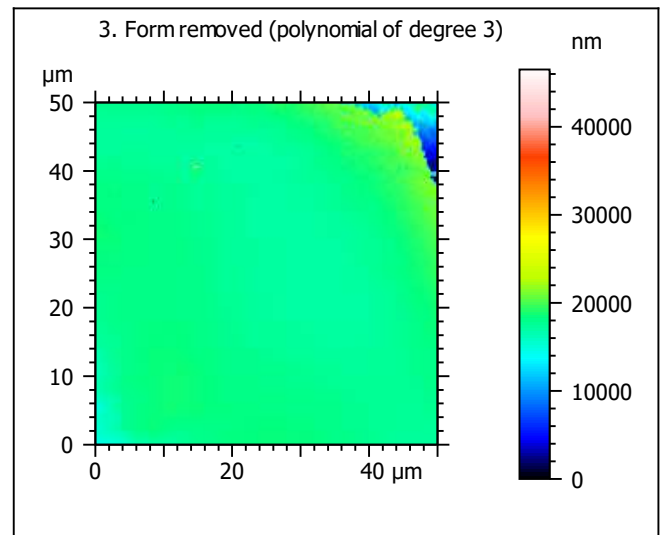


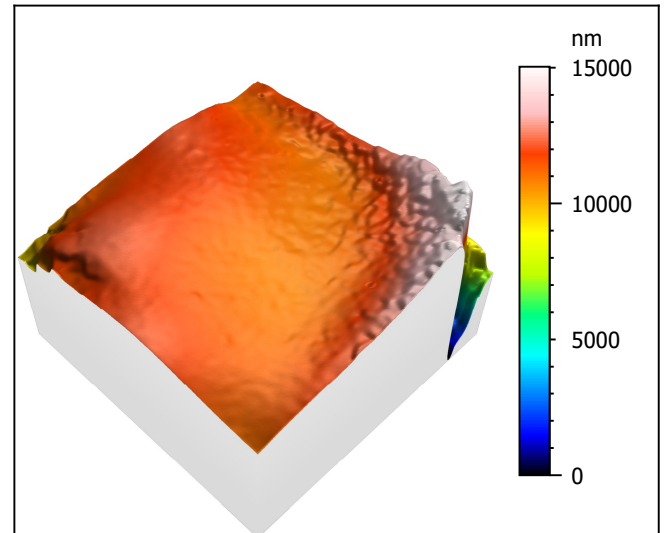
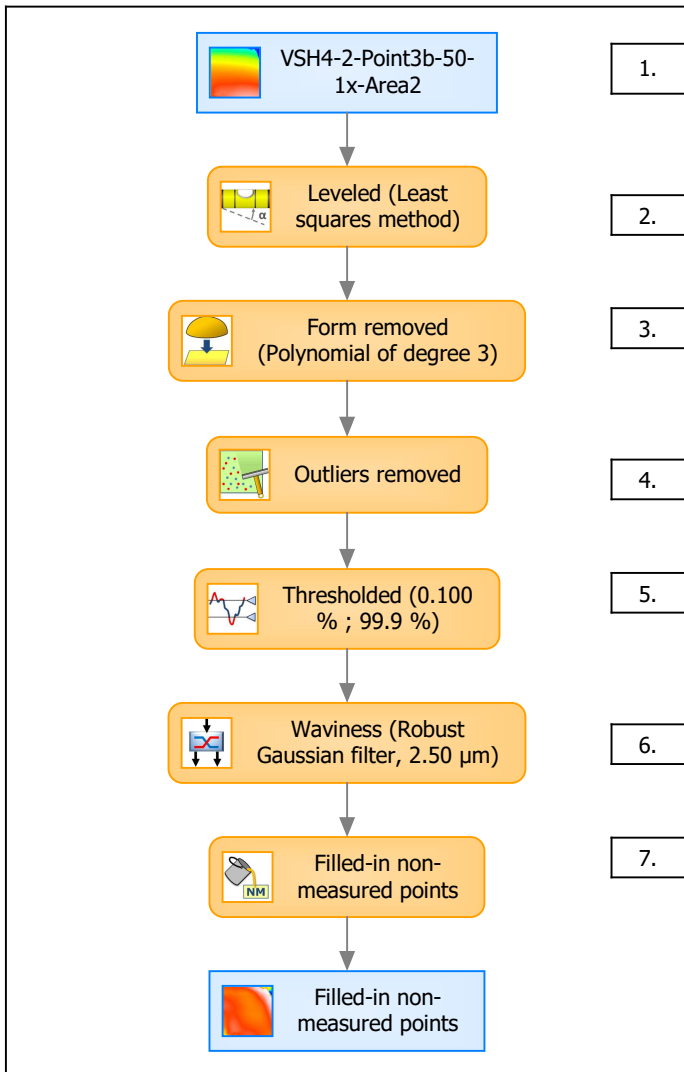
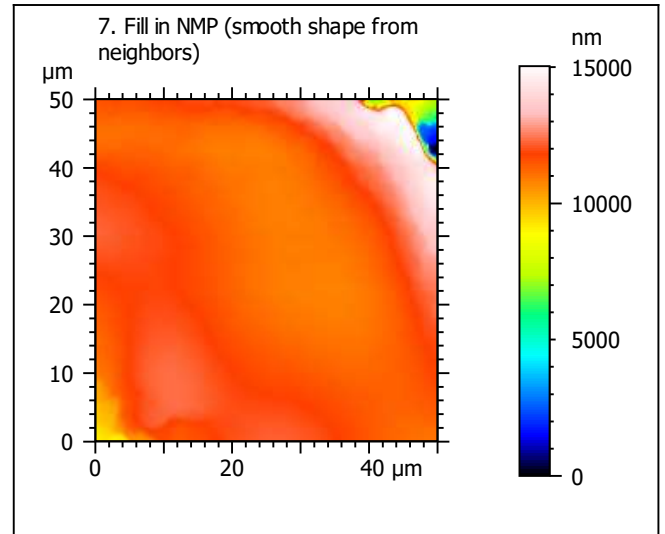
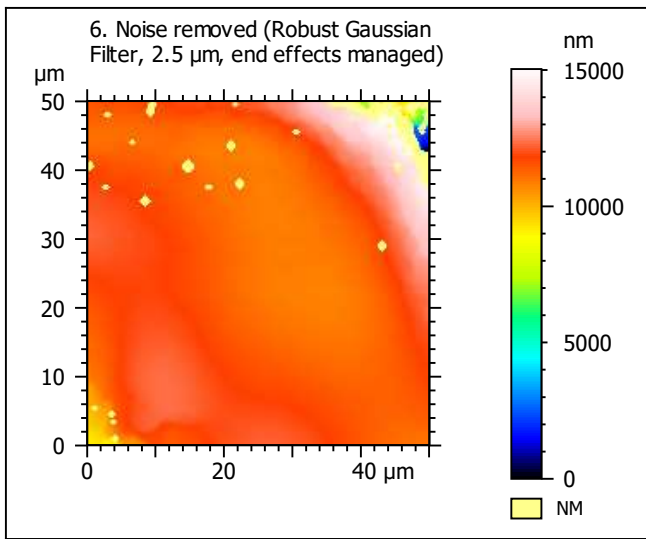
Template to process all extracted 50x50 μm surfaces, acquired with the LEXT 4000 with the 50x/0.95 objective at 1x zoom

A. Processing



| Identity card | | | |
|---------------|---|--------|--|
| Name: | VSH4-2-Point3b-50-1x-Area2 | | |
| File path: | D:\Data\Ant...\VSH4-2-Point3b-50-1x-Area2.sur | | |
| Axis: | X | | |
| Length: | 50.0 | μm | |
| Size: | 201 | points | |
| Spacing: | 0.250 | μm | |
| Axis: | Y | | |
| Length: | 50.0 | μm | |
| Size: | 201 | points | |
| Spacing: | 0.250 | μm | |
| Axis: | Z | | |
| Length: | 58952 | nm | |
| Size: | 34409 | digits | |
| Spacing: | 1.71 | nm | |
| NMP ratio: | 0.00 % (0 Pts) | | |





| Identity card | | | |
|---------------|---|---------------|--|
| Name: | VSH4-2-Point3b-50-1x-Area2 > Leveled (Leas... | | |
| Axis: | X | | |
| Length: | 50.0 | μm | |
| Size: | 201 | points | |
| Spacing: | 0.250 | μm | |
| Axis: | Y | | |
| Length: | 50.0 | μm | |
| Size: | 201 | points | |
| Spacing: | 0.250 | μm | |
| Axis: | Z | | |
| Length: | 15034 | nm | |
| Size: | 8775 | digits | |
| Spacing: | 1.71 | nm | |
| NMP ratio: | 0.00 % (0 Pts) | | |

Analyses:

8. ISO 25178

9. Furrow

10. Texture isotropy and direction

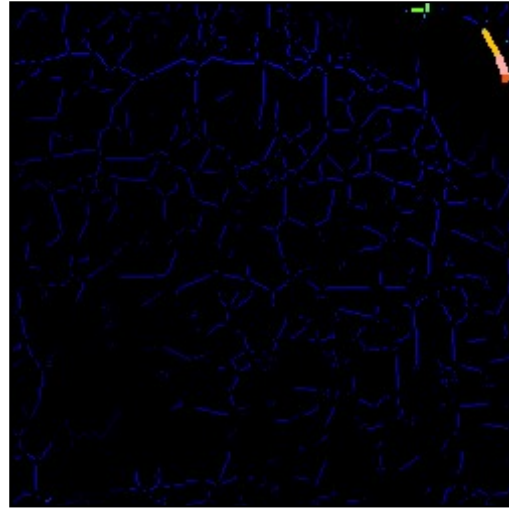
11. SSFA

B. Analyses

8. ISO 25178-2 parameters on surface #7

| ISO 25178 | | |
|--------------------------------|-------|-------------------------------|
| Height Parameters | | |
| Sq | 1070 | nm |
| Ssk | -3.05 | |
| Sku | 33.3 | |
| Sp | 3481 | nm |
| Sv | 11553 | nm |
| Sz | 15034 | nm |
| Sa | 603 | nm |
| Functional Parameters | | |
| Smr | 2.40 | % |
| Smc | 768 | nm |
| Sxp | 1181 | nm |
| Spatial Parameters | | |
| Sal | 3.17 | μm |
| Str | 0.176 | |
| Std | 7.25 | $^{\circ}$ |
| Hybrid Parameters | | |
| Sdq | 0.805 | |
| Sdr | 7.46 | % |
| Functional Parameters (Volume) | | |
| Vm | 0.105 | $\mu\text{m}^3/\mu\text{m}^2$ |
| Vv | 0.873 | $\mu\text{m}^3/\mu\text{m}^2$ |
| Vmp | 0.105 | $\mu\text{m}^3/\mu\text{m}^2$ |
| Vmc | 0.516 | $\mu\text{m}^3/\mu\text{m}^2$ |
| Vvc | 0.760 | $\mu\text{m}^3/\mu\text{m}^2$ |
| Vvv | 0.112 | $\mu\text{m}^3/\mu\text{m}^2$ |

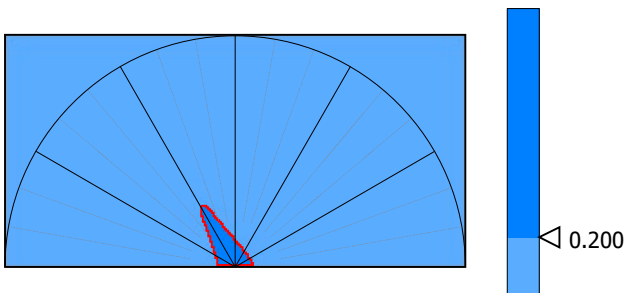
9. Furrow analysis surface #7



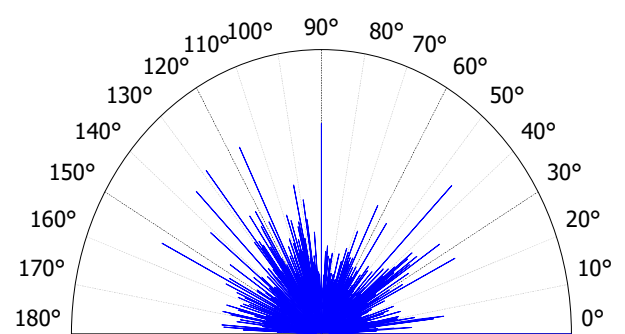
All furrows are shown.

| Parameters | Value | Unit |
|--------------------------|-------|--------|
| Maximum depth of furrows | 5808 | nm |
| Mean depth of furrows | 432 | nm |
| Mean density of furrows | 2486 | cm/cm2 |

10. Texture isotropy and direction on surface #7



| Parameters | Value | Unit |
|---------------------|-------|---------------|
| Isotropy | 20.5 | % |
| Periodicity | ***** | % |
| Period | ***** | μm |
| Direction of period | ***** | $^{\circ}$ |



| Parameters | Value | Unit |
|------------------|-------|------------|
| Isotropy | 17.6 | % |
| First Direction | 0.258 | $^{\circ}$ |
| Second Direction | 90.0 | $^{\circ}$ |
| Third Direction | 45.0 | $^{\circ}$ |

11. SSFA on surface #7

